

# Solar thermal transfer with Schüco

Solar heat with Premium and Compact lines



SCHÜCO

## Solar thermal transfer with Schüco: Heat for 3 to 400 people

### Product packages for solar heat

Schüco offers a variety of perfectly tailored solar packages. The introductory package is a system with two collectors and a 300 litre solar storage cylinder for heating water for a family of up to four people. The most comprehensive package with eight collectors and a 1000 litre solar storage cylinder can provide hot water and auxiliary heating for a family of up to eight people.

### Individual systems for apartment buildings

Schüco provides expertise and components for designing individual systems for apartment buildings and special applications that are not covered by the Schüco range of solar packages. Schüco actively supports the design of buffer storage cylinders, fresh water stations and domestic hot water stations in order to find the optimum solution for our customers.



Family home with solar thermal system  
for hot water supply



Apartment building with solar thermal system  
for auxiliary heating

### Solar heat also for large systems

For large-scale projects, Schüco supplies custom-made solutions for hospitals, hotels, restaurants and agricultural use. The comprehensive product portfolio also allows highly complex solutions to be created from a single system. Schüco consultants and the project office provide support in project planning and component combinations.



Large thermal system in the façade  
of an apartment block

## Schüco Compact and Schüco Premium – two solar product lines for quality and design

### **Two product lines, the same high quality**

In order to provide maximum appeal for different customer groups, Schüco offers a choice between the Premium and Compact lines. The distinguishing features are different collector sizes, installation options and ranges of fittings for solar storage cylinders.

### **Schüco Compact line**

The Compact line products represent uncompromising quality at attractive prices. This is achieved by focusing on the three most common installation methods and an attractive frame colour.



Compact on-roof installation

### **Schüco Premium line**

Within the Premium line, any combination of photovoltaic modules, thermal collectors, hot-air collectors and roof windows can be used. The SchücoSol DG double-glass collector is an exclusive innovation in the Premium line which provides a clear surplus for auxiliary heating and is particularly suitable for high-temperature processes. The range of solar storage cylinders for the Premium line is characterised by accessories such as layering and fresh water technology.



Premium in-roof installation



## Schüco Compact: three types of installation



On-roof installation

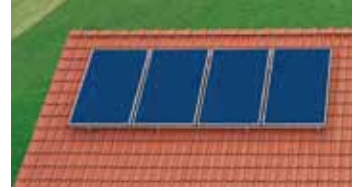


Flat-roof installation



In-roof installation

## Schüco Premium: six types of installation



On-roof installation



Flat-roof installation



In-roof installation



Complete roof installation



Canopy installation



Façade installation

**Schüco –  
the address for windows and solar products**

As leading innovator in system-based construction, Schüco supplies components for the entire building envelope, including specialised software solutions for design, construction, calculation and fabrication.



- **Aluminium systems** Comprehensive range of profiles for façades, skylights, windows, doors, conservatories, balconies, balustrades, protection and security constructions
- **Steel systems** Individual profile solutions for façades, industrial doors and door technology
- **Solar energy systems** Photovoltaic and solar thermal transfer units perfectly tailored to one another guarantee a uniform installation system
- **Schüco Design** Advanced aluminium system technology for a broad range of designs

## Schüco solar technology – only for qualified installers

### Direct communication

Our large, highly-qualified sales team facilitates frequent, personal contact between Schüco and the fabricators. This enables us to deal with the requirements of private customers quickly and easily, especially regarding special orders.

### Schüco solar training

The wide range of training courses on offer at Europe's largest solar training centre enables your employees to gain extensive knowledge of the range of products and their installation.

#### Schüco International

Whitehall Avenue Kingston  
Milton Keynes MK10 0AL  
Telephone: 01908 282111 Fax: 01908 282124  
www.schueco.co.uk



All aluminium, steel and solar systems developed by Schüco are characterised by their high level of structural reliability and superior quality. The pursuit of perfection, teamwork and a dynamic organisation ensure success.

Schüco is involved in the following initiatives:



PVC-U in resource recycling



Aluminium and environment in window and façade construction